

# Plymouth Streetscape & Riverfront Design Development



**REGENERATION**  
— BY DESIGN —

June 27, 2022

# Purpose of this Study

---

- This is NOT a master plan for the downtown;
- It IS a plan for improvements to the public spaces in the central core of the downtown in order to set the stage for preservation and new development;
- There is a window of opportunity to prepare a plan and obtain funding to implement these improvements;
- Public space improvements will encourage downtown redevelopment, tourism, and will increase the tax base, benefiting the entire town, the county and citizens.

# Citizen Views of Plymouth

---

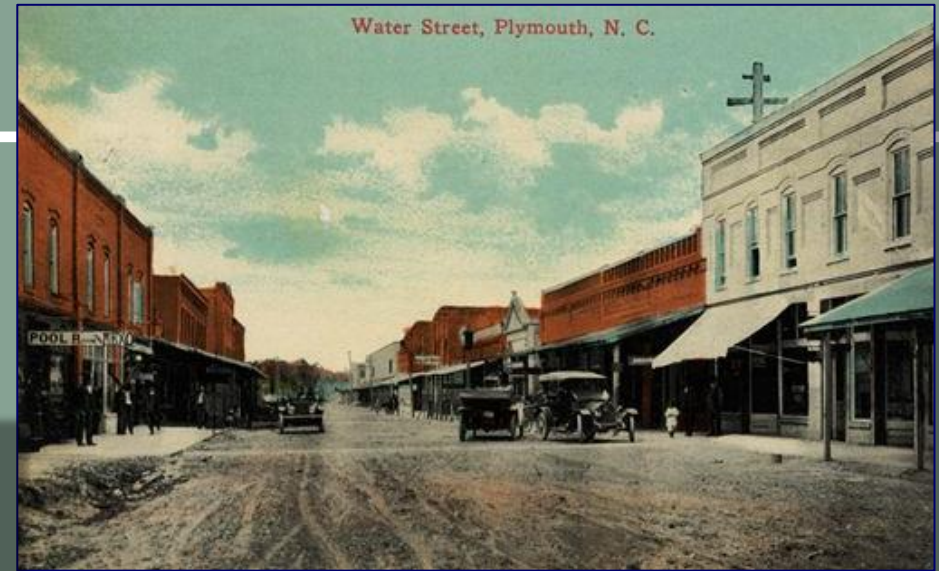
## STRENGTHS

- Riverfront
- Amazon of the North
- Harbortown
- Black Bears
- Outdoor Activities
- Wildlife
- History
- Historic Downtown

## PROBLEMS, NEEDS

- Infrastructure conditions
- Poverty
- Lack of Jobs
- Lack of Interest
- Empty Buildings
- Public Safety
- Activities for Children
- Racial Divide

# History



**REGENERATION**  
— BY DESIGN —

# DT Strengths



# DT Strengths



# DT Issues

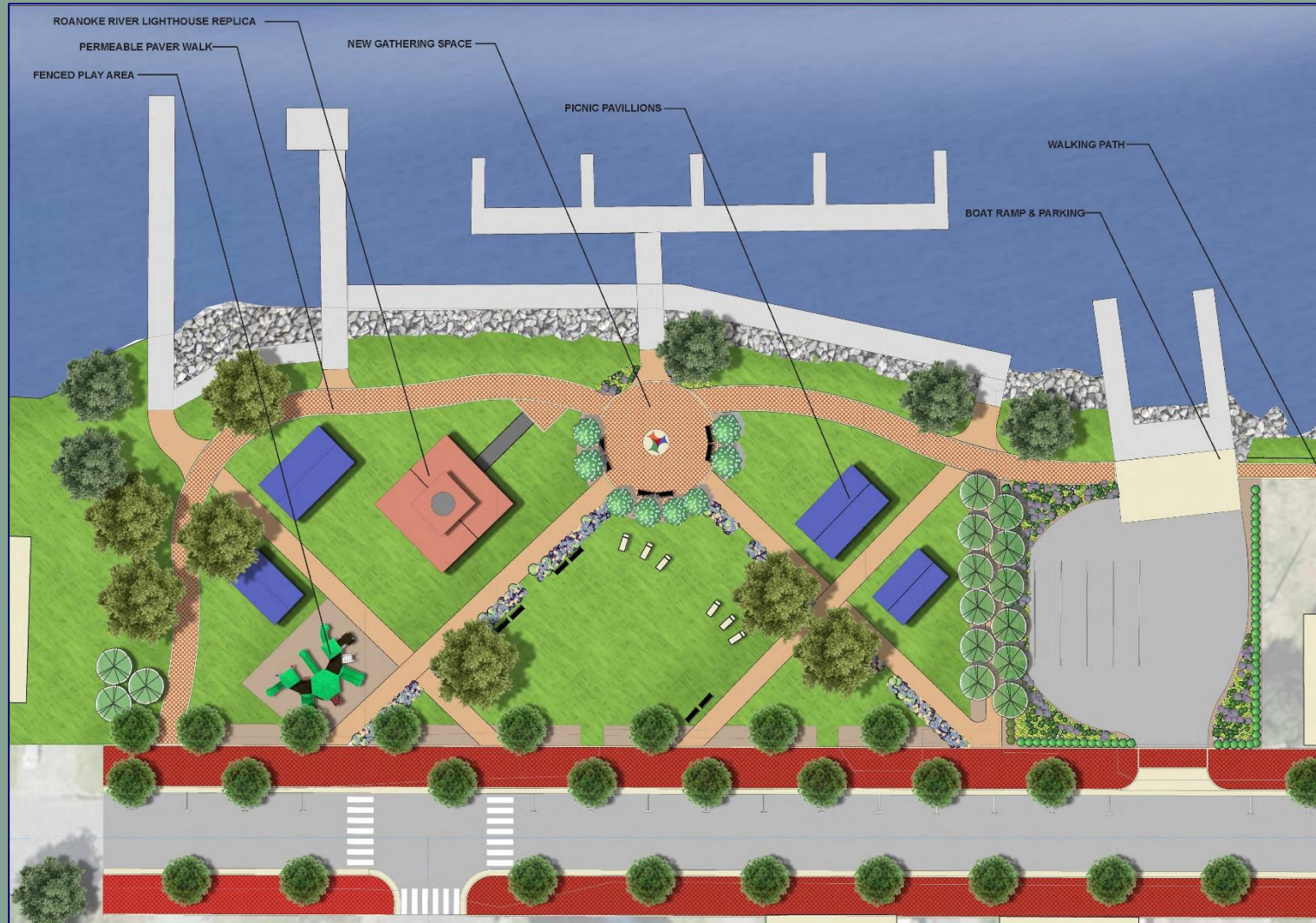


**REGENERATION**  
— BY DESIGN —

# Overall Plan – Riverfront and Streets



# Riverfront: West to East / Lighthouse Park



**REGENERATION**  
— BY DESIGN —

# Central Riverfront: Multi-Use Path

---

- Replace road with multi-use path including bike, ped, and vehicular
- Designed to slow down vehicles, and/or restrict access
- Use permeable pavers to improve drainage during rain/storm events
- Create a “seam” between historic buildings and existing docks/gardens/walkways/bulkheads

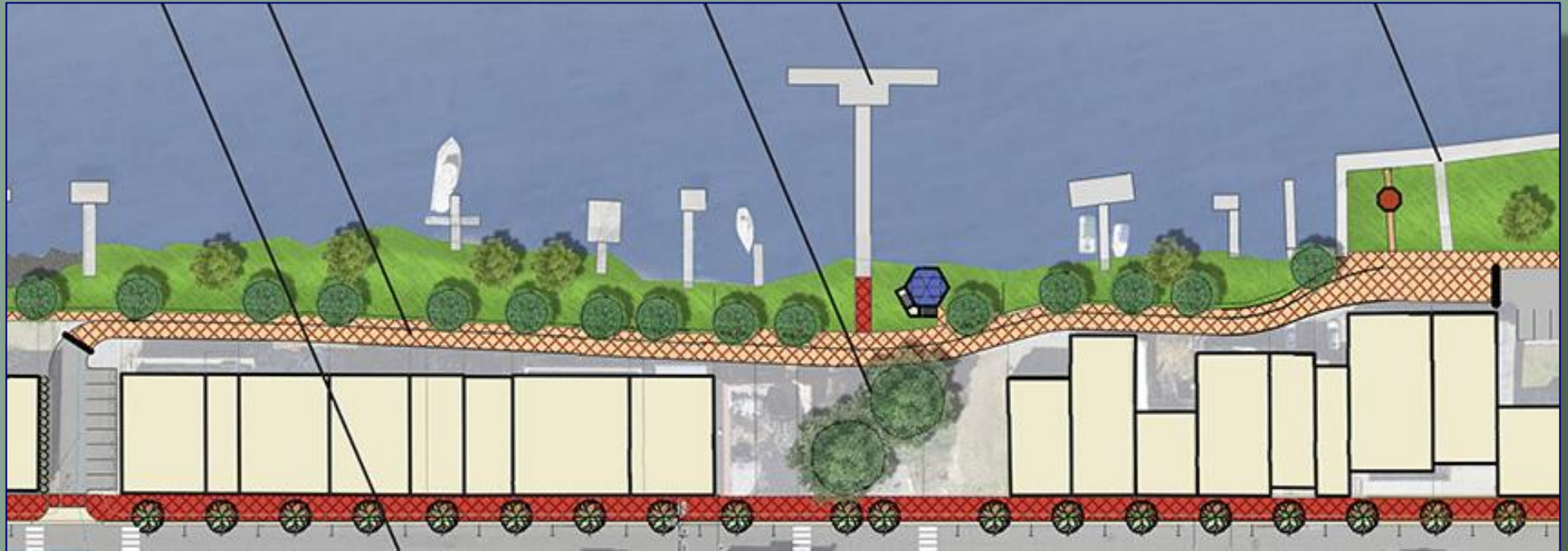
# Central Riverfront: Separated Paths



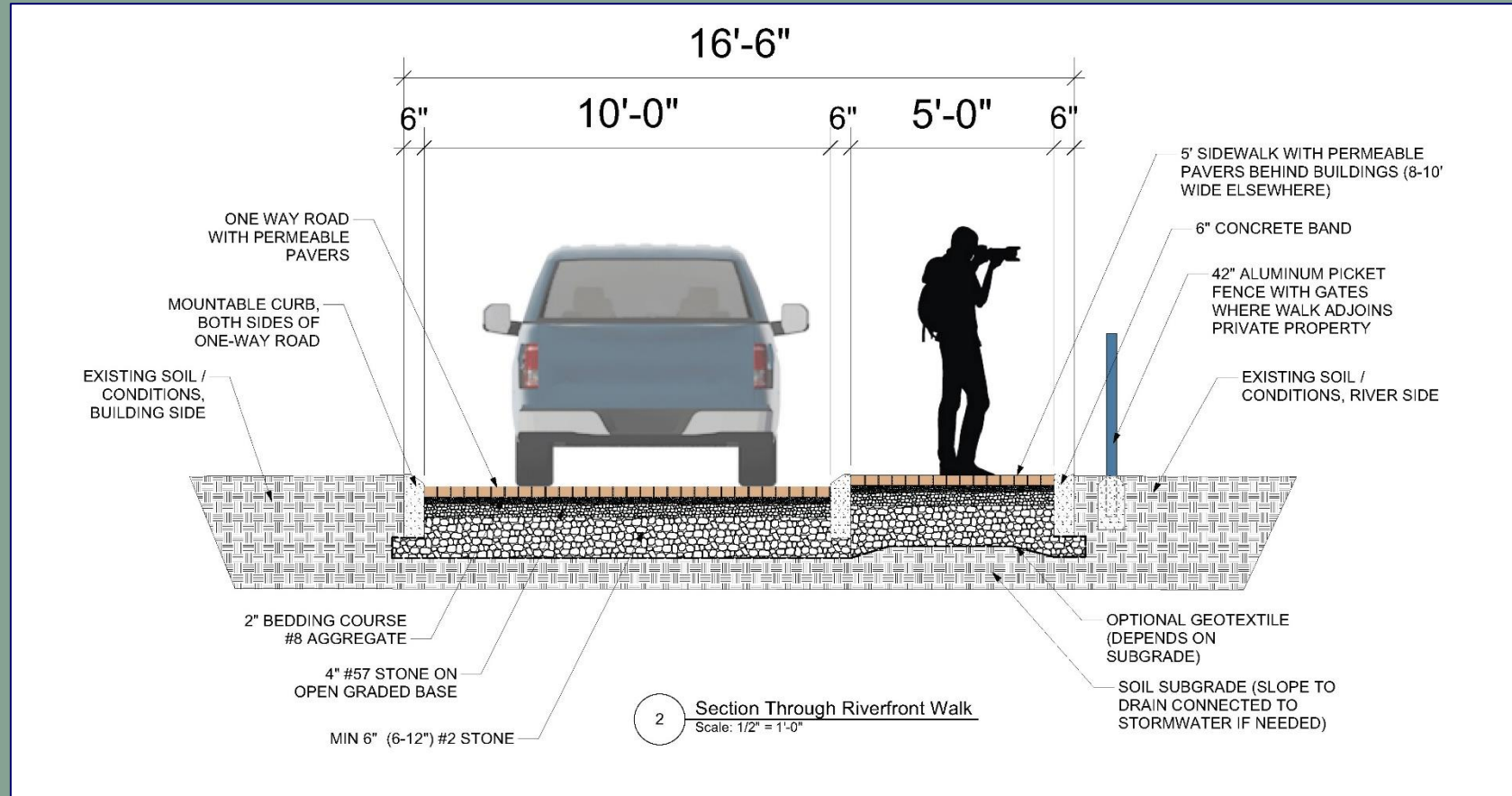
- Improve/replace road
- Add continuous sidewalks +/- bike paths
- Raised walkways attached to buildings or joining existing



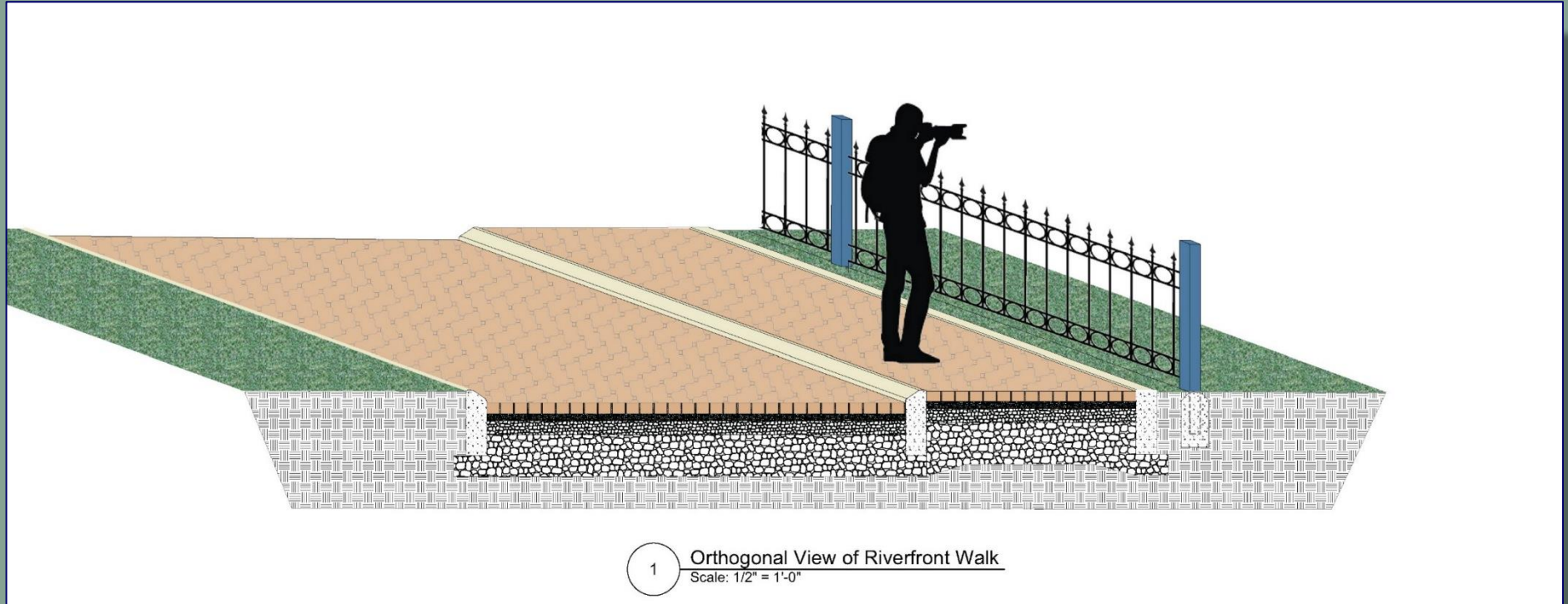
# Riverfront: West to East / Behind Buildings



# Riverfront: West to East / Behind Buildings



# Riverfront: West Park Area



# DT Center Park

---



**REGENERATION**  
— BY DESIGN —

# Riverfront: West to East / East Open Area

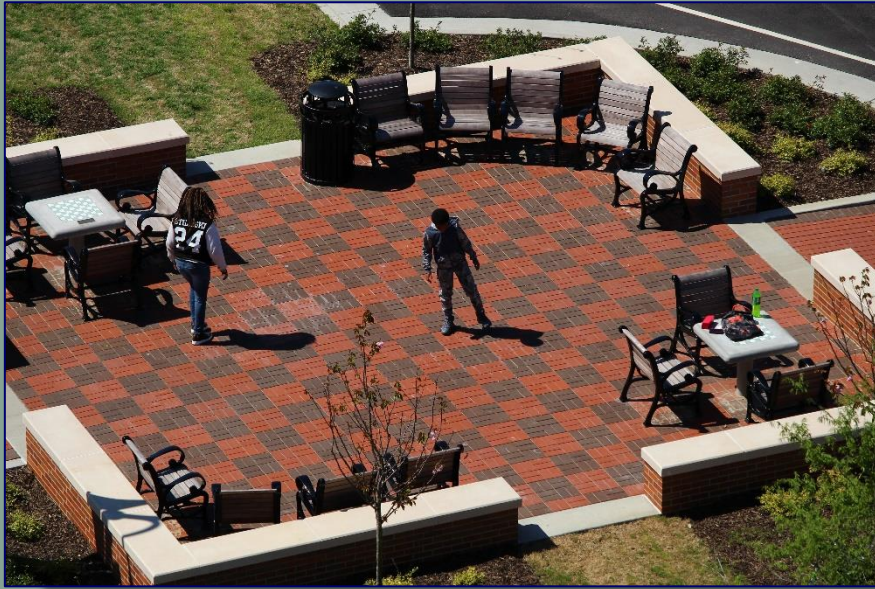


# Pedestrian Priority

---

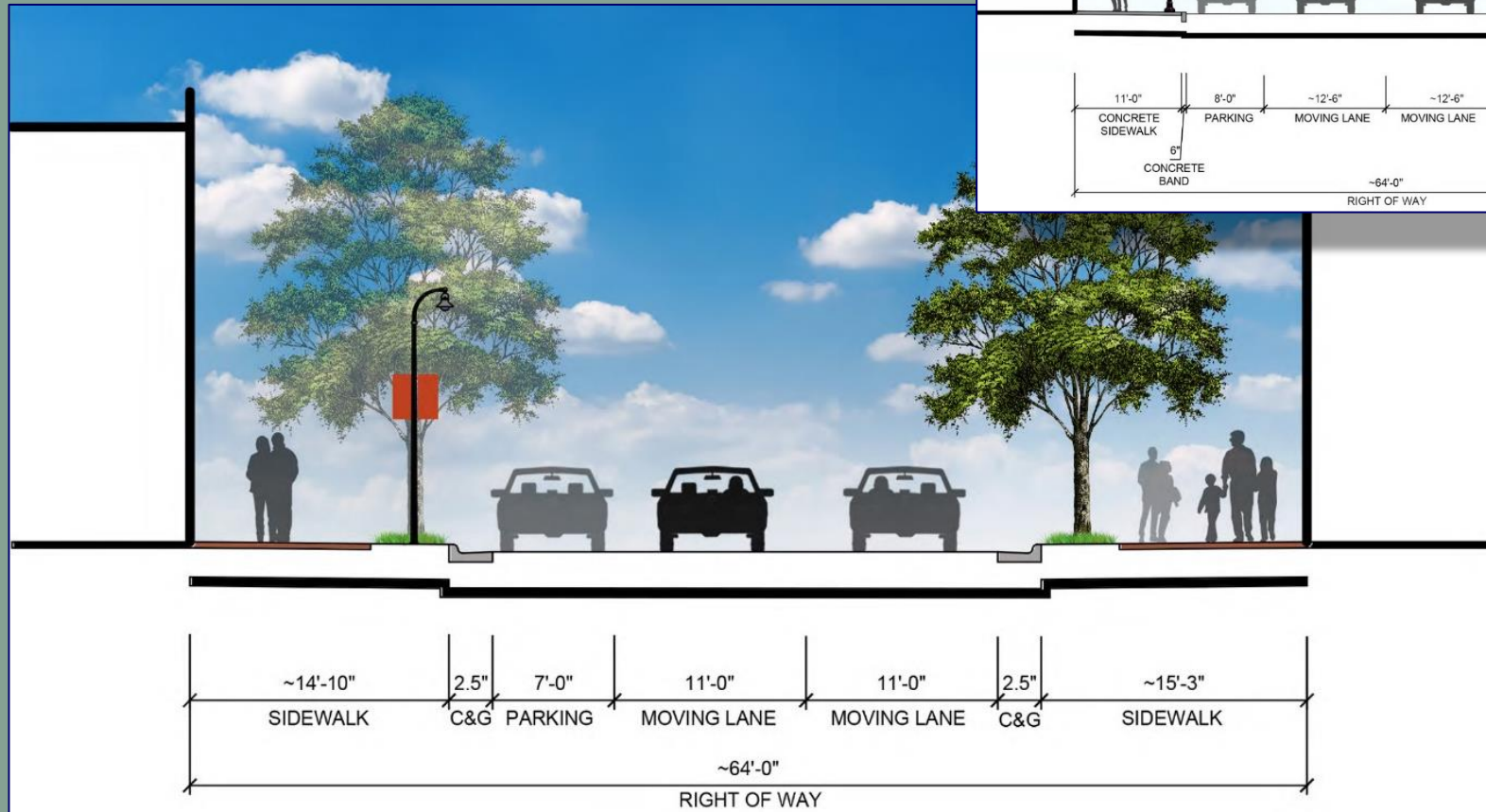
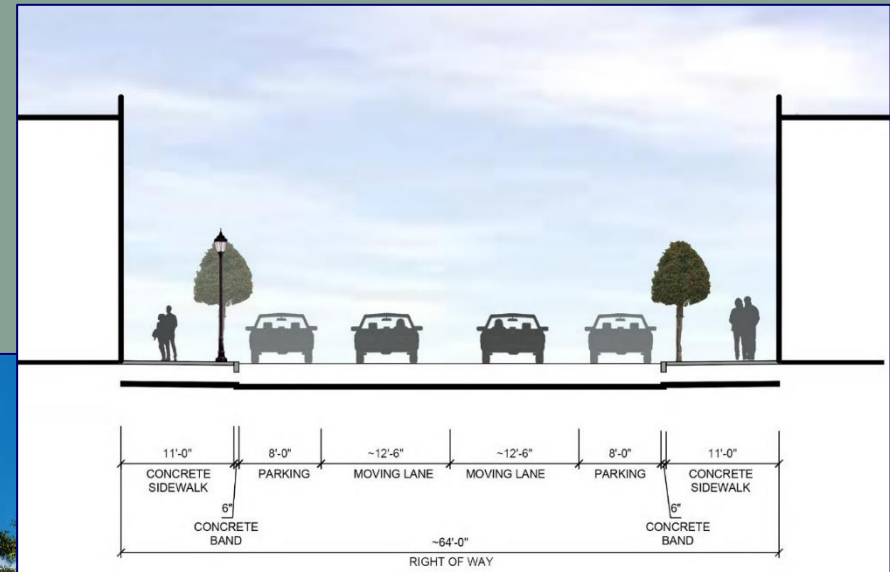


# Streetscapes as Identity

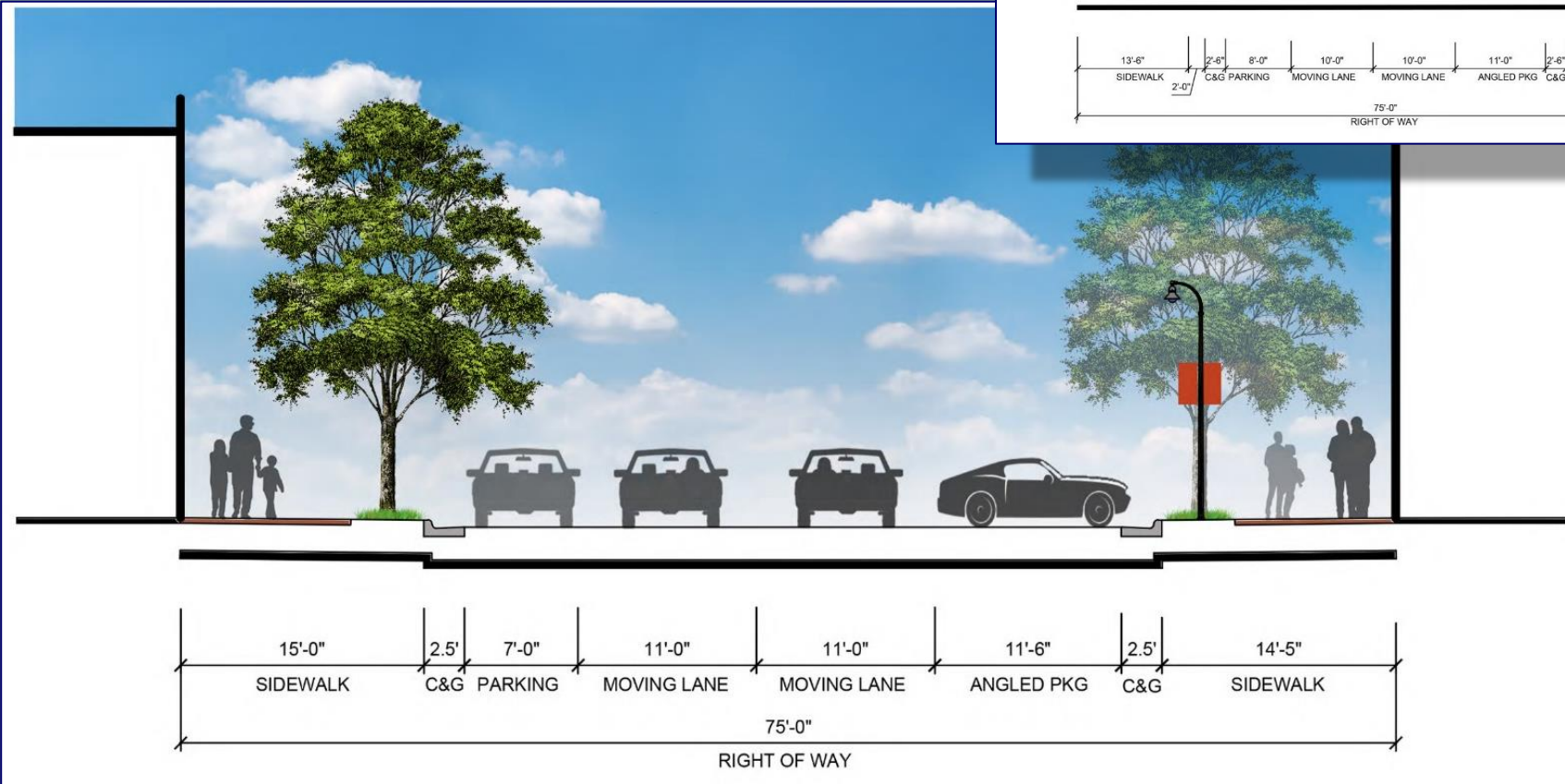
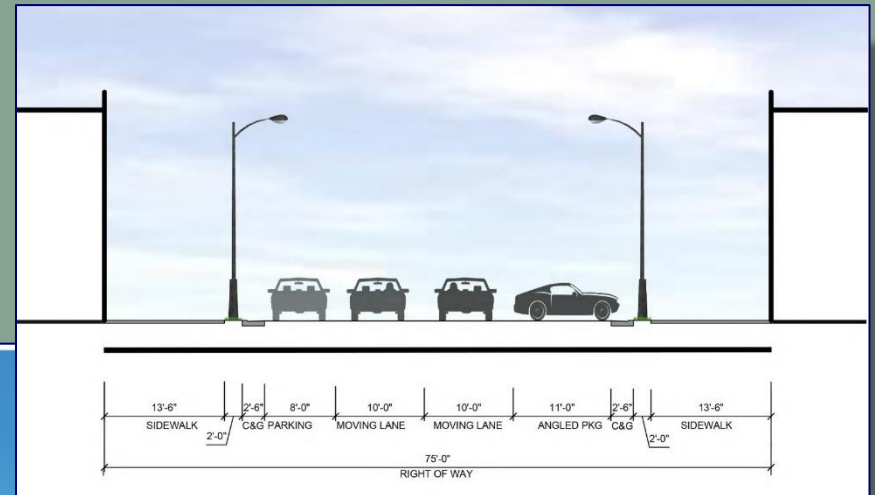


**REGENERATION**  
— BY DESIGN —

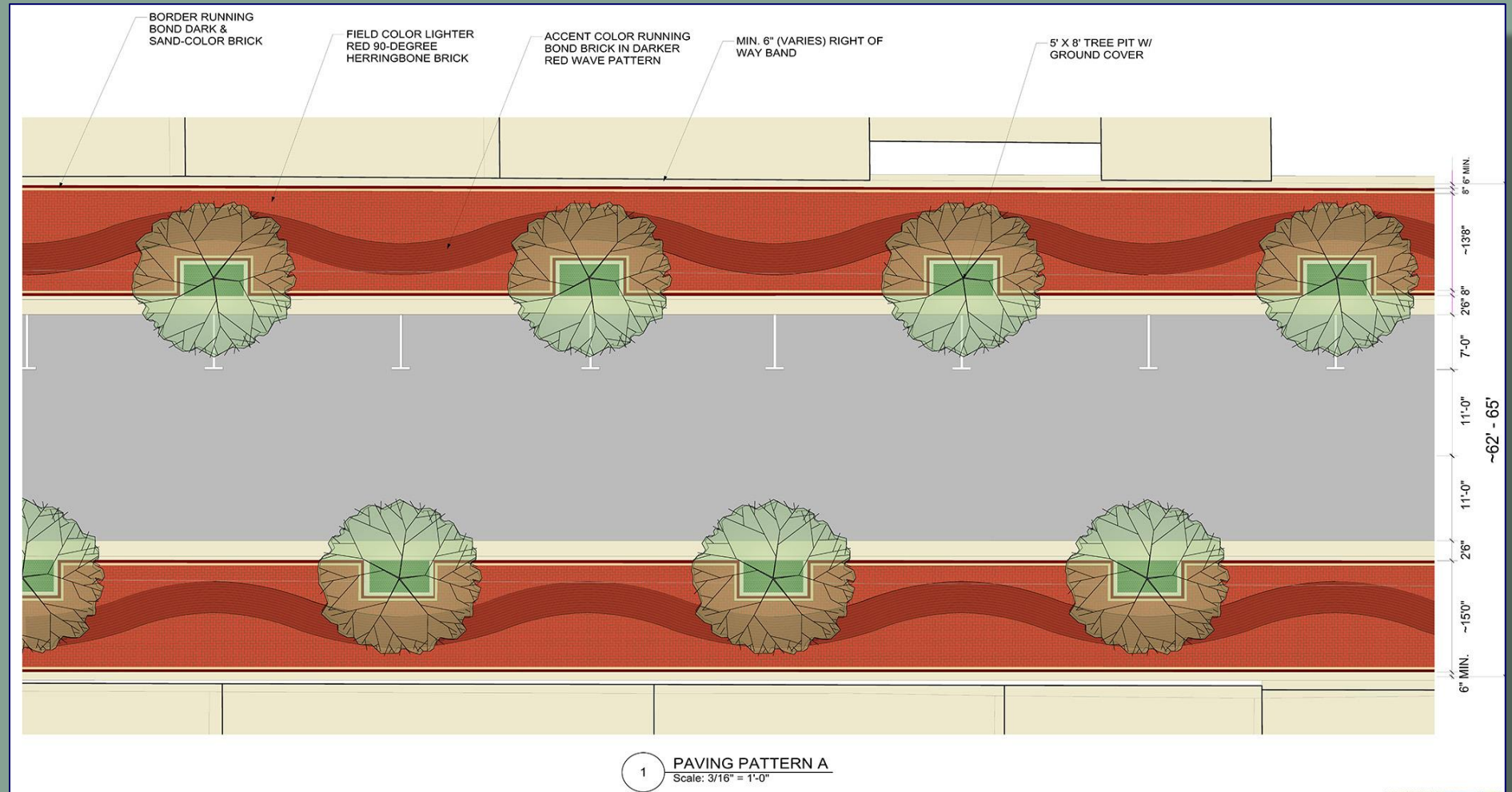
# Street Cross Sections: Water Street



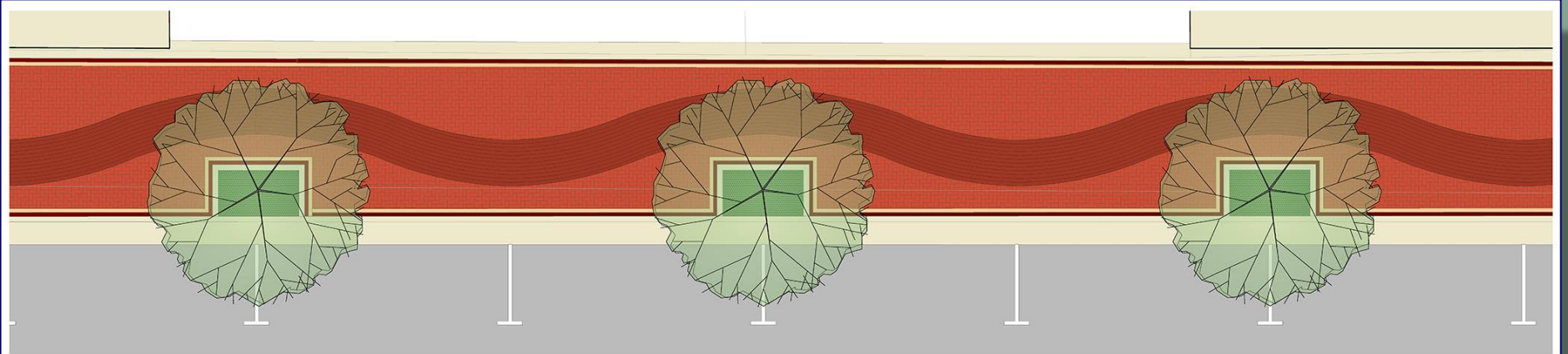
# Street Cross Sections: Washington Street



# Street Design Plans

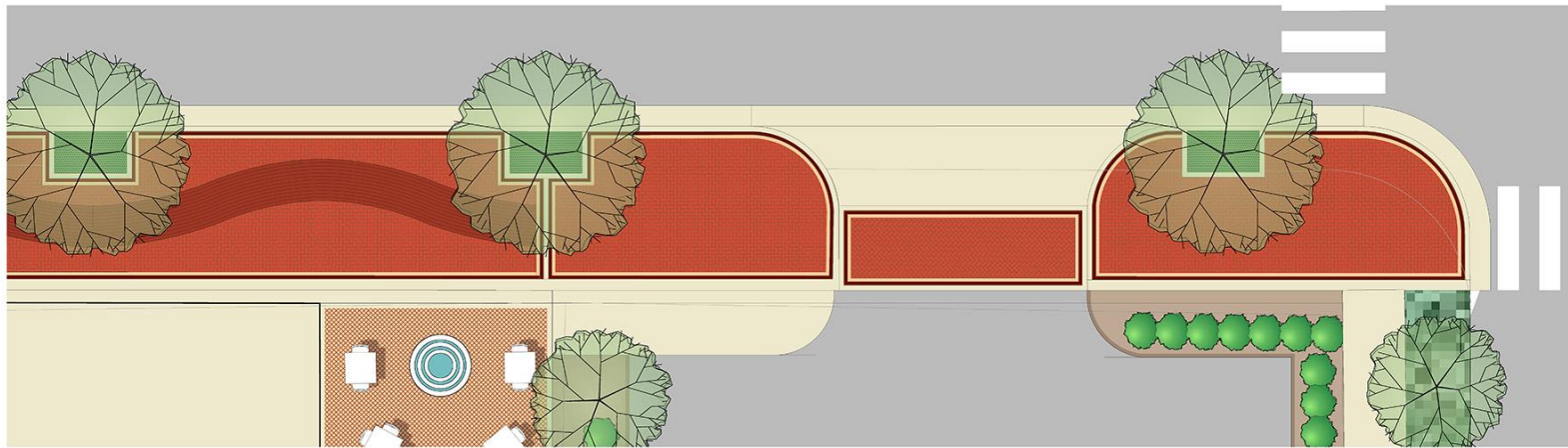


# Street Design Plans



1

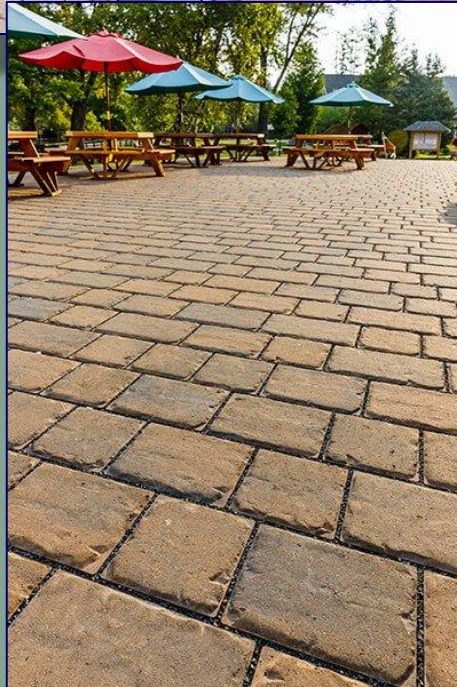
**PROPOSED PAVING PATTERN A**  
Scale: 1/4" = 1'-0"



2

**PROPOSED PAVING PATTERN A -- TREATMENT AT CORNERS**  
Scale: 3/16" = 1'-0"

# Central Riverfront: Multi-Use Path



## MATERIALS

- Permeable Brick
- Permeable Concrete Pavers
- Asphalt
- Concrete



**REGENERATION**  
— BY DESIGN —

# Placemaking



- Parks
- Private Plazas
- Screening
- Sidewalk Dining
- Art
- Attention to Details



# Placemaking: PEOPLE first



Credit photo: Rafael Pérez Martínez

# Placemaking: PEOPLE first



# Your Role

---

- This plan must be YOUR plan, supported by citizens, staff and local elected officials, and actively advocated to funding agencies and state and federal elected representatives
- Plymouth is fortunate to have someone interested in investing before public improvements, and others will participate if support continues
- Active, not passive role for the community
- Results: Investment, increased tax base, historic buildings saved, business opportunities, jobs, benefits outside the downtown

# Questions / Discussion

---

